



Bittacy Hill

£700,000

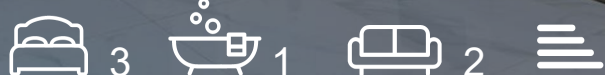
Located in Mill Hill Village, and within walking distance of Mil Hill East Station is this wonderfully extended and modernised 3-bedroom house.

The ground floor of the property consists of a bright and spacious living room, modern open plan kitchen-diner and an additional reception area leading onto a lovely private rear garden, in addition to a W/C. The first floor boasts 3 good sized bedrooms and a family bathroom.

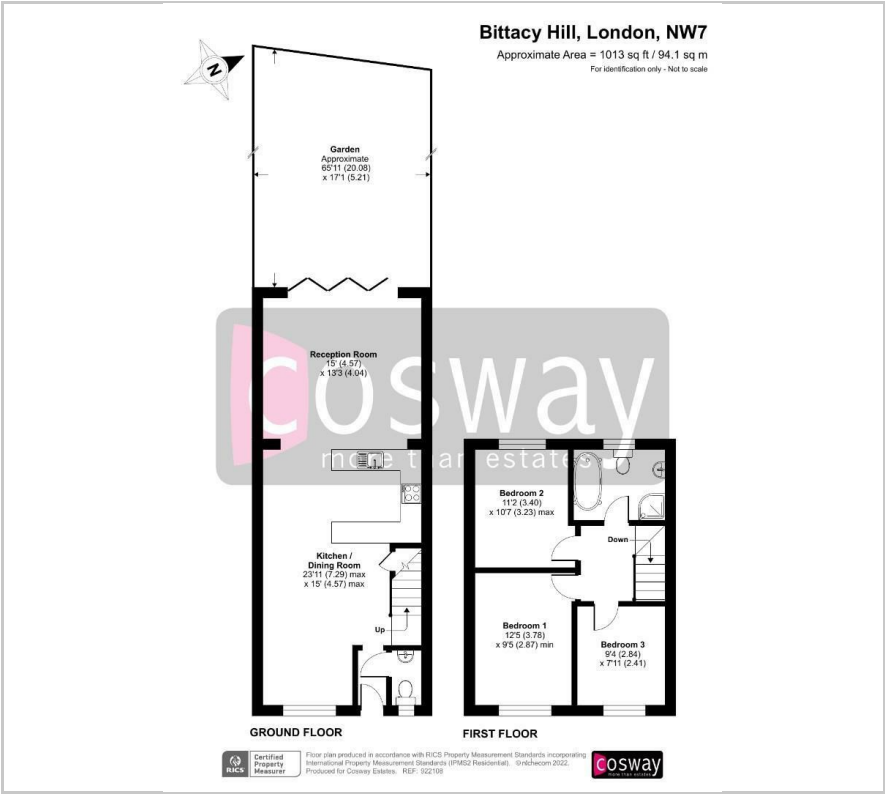
Further benefits include a separate garage, air conditioning in the house, off-street parking, close to transport links and excellent local schools. Sole Agent.

Viewing

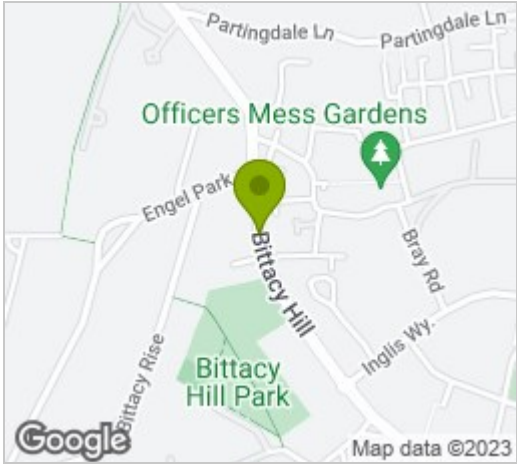
Please contact our Mill Hill Office on 020 8959 0011 if you wish to arrange a viewing appointment for this property or require further information.



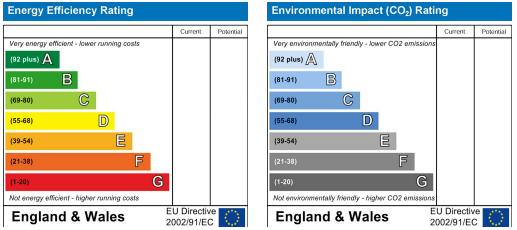
Floor Plan



Area Map



Energy Efficiency Graph



These particulars, whilst believed to be accurate are set out as a general outline only for guidance and do not constitute any part of an offer or contract. Intending purchasers should not rely on them as statements of representation of fact, but must satisfy themselves by inspection or otherwise as to their accuracy. No person in this firms employment has the authority to make or give any representation or warranty in respect of the property.